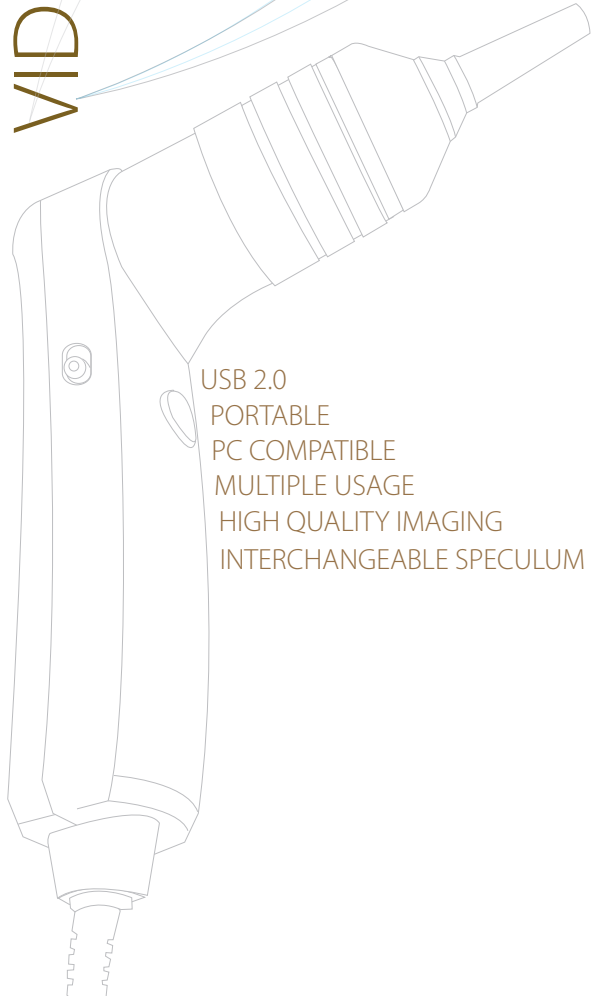


VIDEO OTOSCOPE

BioCam2.0™

The new revolution in clinical diagnosis
CUTTING EDGE TECHNOLOGY



USB 2.0
PORTABLE
PC COMPATIBLE
MULTIPLE USAGE
HIGH QUALITY IMAGING
INTERCHANGEABLE SPECULUM

Goldline
The New Standard™

VIDEO OTOSCOPE

BioCam2.0™

The new revolution in clinical diagnosis



Goldline
The New Standard™

BioCam2.0™ VIDEO OTOSCOPE

This revolutionary product developed by Goldline Medical takes clinical diagnosis to a whole new level.

Its portability and high resolution imaging and video recording make clinical diagnosis simple and practical. It educates the client in understanding the process resulting in increased compliance.

This one of a kind video otoscope has multi-use capabilities, giving medical professionals more flexibility in one device. Designed with precision and cutting edge technology.

FEATURES

Portable

This device can be plugged into any Microsoft platform computer with a USB 2.0 port.

High Resolution Imaging and Video Capture

The BioCam2.0™ with a quad VGA of 1280H x 960V, 15 fps creates sharp and accurate imaging for easy diagnosis. The BioCam2.0™ also records real-time video through live capture.

Multi Usage

With its live capture, easy one touch record and focus functions, the BioCam2.0™ allows before and after imaging. It is capable of being used for multiple diagnosis as in skin lesions, dental tartar, ear infections and more.

Interchangeable Speculum

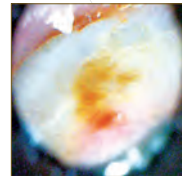
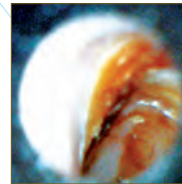
Interchangeable disposable speculums offer medical professionals more flexibility for diagnosing.

THE NEW REVOLUTION IN CLINICAL DIAGNOSIS

BioCam2.0™

Precision in clinical imaging

Sharp
Precise
Accurate



PRODUCT SPECIFICATIONS

Parameter	Typical Value	
Optical Format	1/4.5 inch VGA CMOS	
Sensor Resolution	660H X 507V, 334,620 pixel	
Effective Pixels	640H X 480V, 307,200 pixel	
Camera Function	Live preview, capture, record, focus	
Sensor Pixel Size	3.6 μm X 3.6 μm	
RESOLUTION	Quad VGA	1280H X 960V, 15fps, USB 2.0 only [interpolation]
	XGA	1024H X 768V, 15fps, USB 2.0 only [interpolation]
	SVGA	800H X 600V, 15fps, USB 2.0 only [interpolation]
	VGA	640H X 480V, 30fps
	CIF	352H X 288V, 30fps
	QVGA	320H X 240V, 30fps
CAMERA	Lighting	6EA White LED
	Supply Voltage	5.0V, USB

One Year Limited Warranty.

Goldline
The New Standard™

Goldline
The New Standard™